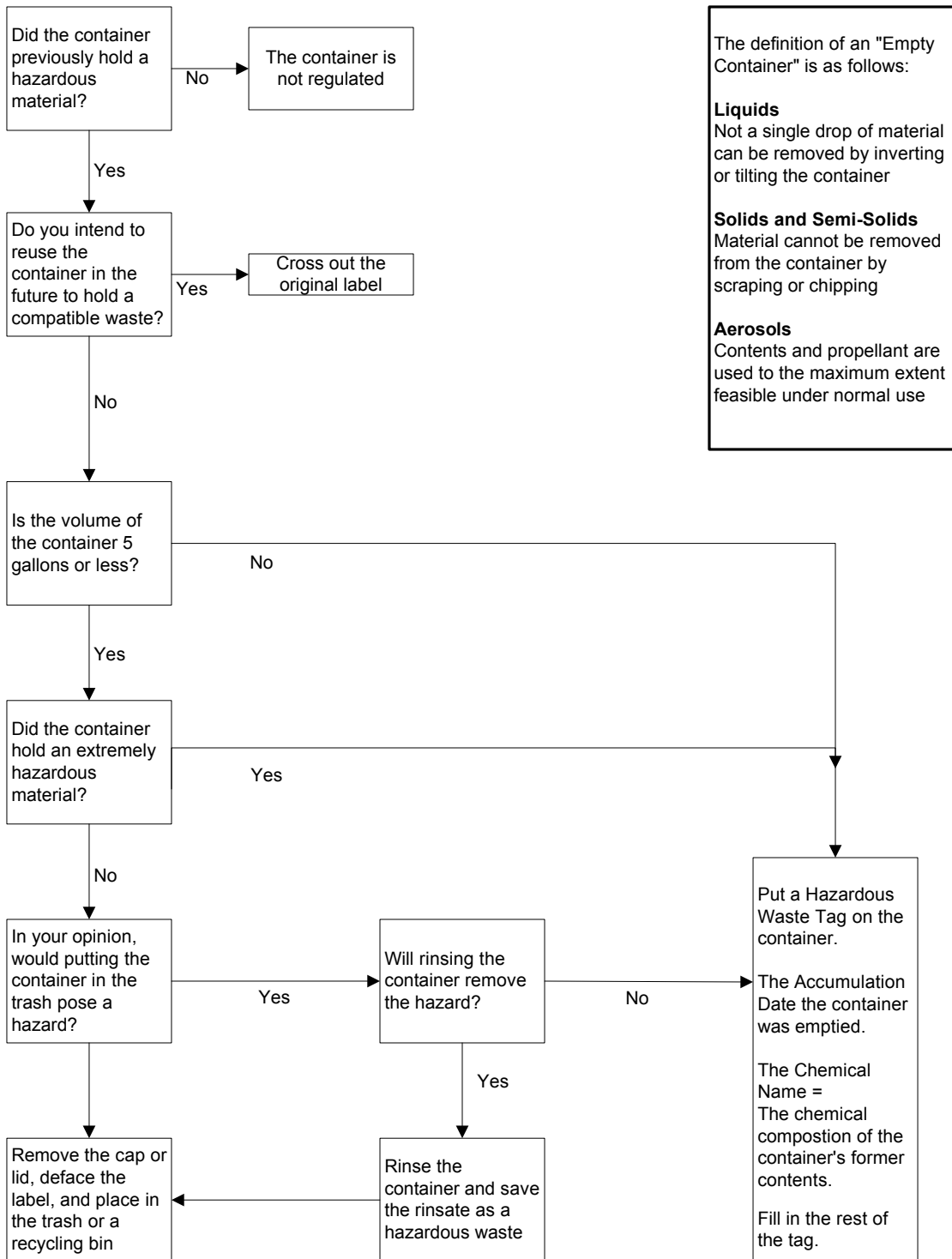


# Empty Container Decision Tree



The definition of an "Empty Container" is as follows:

**Liquids**  
Not a single drop of material can be removed by inverting or tilting the container

**Solids and Semi-Solids**  
Material cannot be removed from the container by scraping or chipping

**Aerosols**  
Contents and propellant are used to the maximum extent feasible under normal use